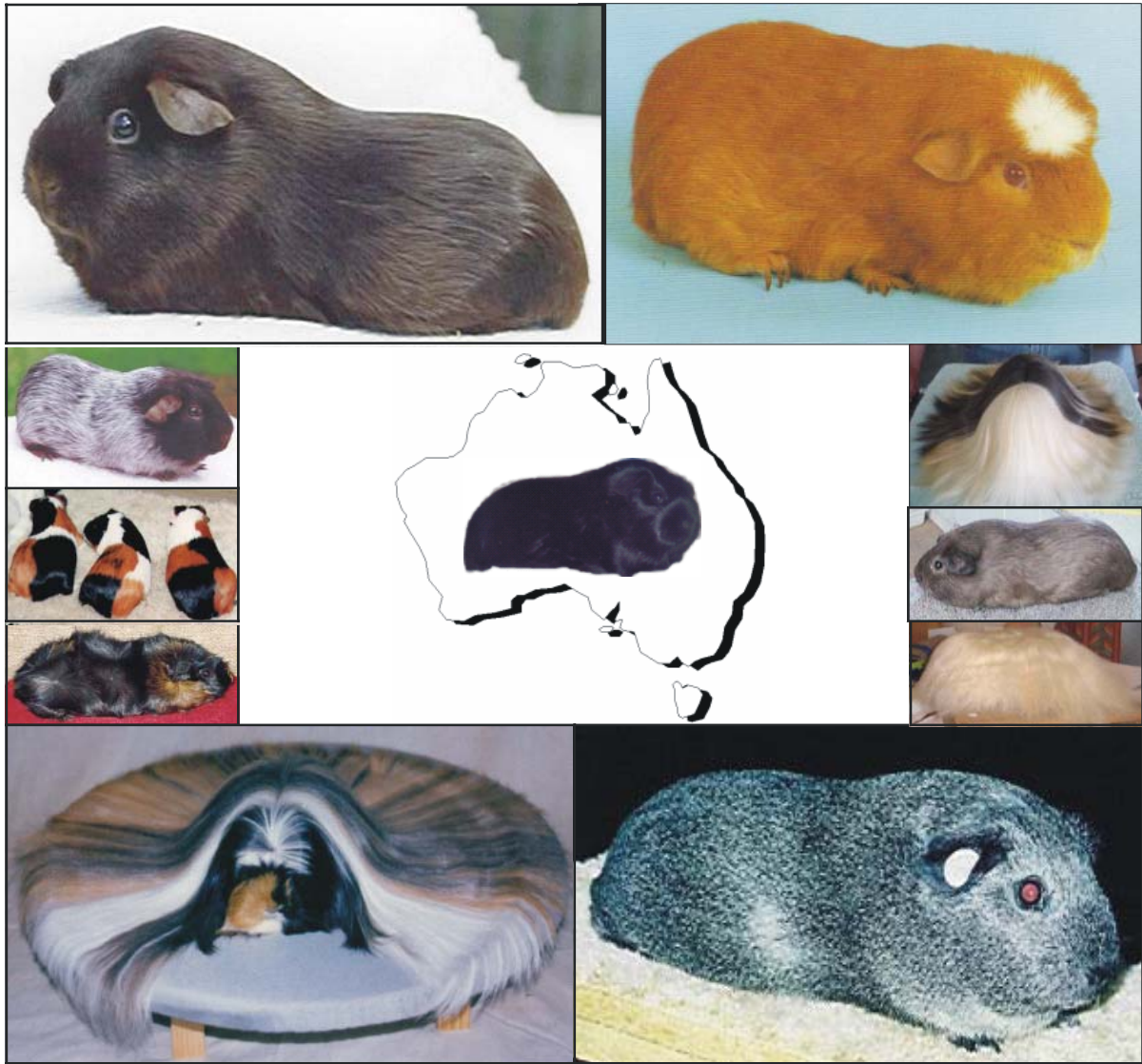


Australian National Cavy Council



Approved Standards For Exhibition Cavies

2008/2009 Edition

Table of Contents

<u>Page</u>	<u>Topic / Standard</u>	<u>Page</u>	<u>Topic / Standard</u>
2	General Disqualifications & Faults		
3	Glossary		
Coarse Coat			
5	Abyssinian		
6	Rex		
Crested			
7	Ticked Crested		
7	American Crested		
8	English Crested		
8	Dalmatian Crested		
9	Dutch Crested		
9	Himalayan Crested		
10	Roan Crested		
10	Tortoise & White Crested		
10	Rare Variety Crested		
Longhair			
11	Alpaca		
12	Coronet		
13	Merino		
14	Peruvian		
15	Sheltie		
15	Texel		
Marked			
16	Bi-Colour		
16	Brindle		
17	Dalmatian		
18	Dutch		
19	Himalayan		
19	Tortoiseshell		
20	Tri-Colour		
20	Roan		
21	Sable		
22	Tortoise & White		
22	Harlequin Guide		
23	Magpie Guide		
Satin			
24	Satin Self		
24	Satin AOV		
Self			
25	Self		
25	Self Slate <i>Guide Standard</i>		
26	Self Cream P/E <i>Guide Standard</i>		
26	Self Colour Requirements		
Ticked			
27	Agouti		
28	Argente		
Unstandardised			
29	Ridge Back <i>Working Title</i>		
29	Sheba <i>Working Title</i>		
30	Gold/Slate Agouti <i>Working Title</i>		

General Disqualifications & Faults—ALL BREEDS

1 Disqualifications - All Breeds

- Sows obviously in-pig
- Running lice
- Breaks in skin
- Breaks and /or sparseness in coat when associated with a skin condition (e.g. mites)
- Artificial colouring
- Fatty eye/s (to be visible without disturbing the eyelid)
- Red flesh around eye/s (to be visible without disturbing the eyelid)
- Physical abnormalities e.g. missing eyes, cataracts, bent legs, wry neck, additional toes with skeletal support. Missing toenails, evident ill health
- Cavies that are NOT ENTIRE (that have been de-sexed)
- The judge may disqualify any cavy he/she thinks unfit for showing
- The judge may order any person or cavy from the competition for bad conduct of one or both
- Identification of any form, other than paper ear tags for numbering purposes, attached to ANY part of an exhibition cavies anatomy
- Cavies that have had substances added to their coat to enhance or alter their appearance and /or specific coat qualities, shall be deemed an alteration to the cavies natural appearance (other than standard grooming and presentation practices) and as such shall be a disqualification. NOTE: Standard grooming practices are for vermin control, shampooing and conditioning prior to exhibition, this is done to present cavies in a clean & vermin free condition.

2 Disqualifications - Particular Varieties

- Side whiskers (all short, smooth haired varieties including Crested)
- Rosettes in coat (except rosetted varieties and a crest on Crested varieties)
- Trimmed coats (all groups except Longhairs)

3 Faults - All Breeds

- Cysts - to be penalised according to the size of the cyst
- Hems in ears - to be penalised in accordance with the importance of ears in the individual breed standard
- Damaged ears - to be penalised in accordance with the importance of ears in the individual breed standard and according to the extent of the damage
- Static Mite - to be penalised to the amount of mite evident
- Breaks and/or sparseness of coat is to be penalised according to the extent
- Dirty, greasy or scurfy coats - to be penalised according to the extent
- Additional toes (without skeletal support)
- Chewed coats

4 Faults - Longhairs

- Trimming of Longhairs to be penalised at the judges discretion

5 Faults - All Varieties - Other than Rosetted Varieties

- Pronounced Quiffs or Swirls in coat, including around the eyes, along sides, on flanks and on belly - to be penalised according to extent

GLOSSARY OF TERMS

used in this Book of Standards

(Terms apply to ALL breeds unless otherwise stated)

Term	Definition as applied to Cavies
Band	Patch of one colour that completely encircles the body, <i>applies to Tortoise & White & Tri Colour</i>
Belt	Patch of one colour that partly encircles the body, <i>applies to Tortoise & White & Tri Colour</i>
Bonnet Strings	Band of ticking colour under the chin, <i>applies to Ticked, q.v. Ticking</i>
Brassy	Lighter shade of Red / Golden
Breached	Patch of one colour that covers the hindquarters, <i>applies to Tortoise & White & Tri Colour</i>
Break In Coat	Patch of missing or thin coat
Break In Skin	An open wound or area on the skin where a scab has formed
Brindling	Intermixture of two different colours of hair. <i>(see also Roaning)</i>
Cobby	(Type) - Broad across the shoulders continuing through to the rump with the same body width throughout. When looking down on the cavy it should be rectangular in shape with rounded corners.
Condition	Fitness / body condition
Crest	Crested cavies, also applies to Coronet & Merino – A symmetrical rosette on the forehead between the eyes and ears. Radiates evenly from a pinpoint centre.
Demarcation	Line between two different areas of the coat, <i>applies to Marked & Ticked, q.v. Ticking</i>
Density	Number of hair fibres per square centimetre, <i>applies to the coat of the cavy</i>
Double Centred	A rosette or crest with two centres, <i>applies to Abyssinian & Crested</i>
Eye Circles	Circles / part circles or the ticking, <i>q.v.</i> , Colour around the eye, <i>applies to Ticked, q.v. Ticking</i>
Fanning <i>(see also Skirting)</i>	Hair which fans out over the hips of a cavy against the normal lie of the coat, <i>applies to Smooth haired varieties.</i>
Fatty Eye	Fatty tissue protruding from between the eyelid and the eye. A disqualification if it is visible without disturbing the eyelid.
Flakiness	A condition apparent when poor undercolour shows through the topcolour giving a two toned peppery effect.
Flesh Ear	Patches of white skin on the ear, <i>applies to Dutch</i>
Folded Ear	A fold in the ear that often affects the ear carriage
Fringe	The hair that falls from between the ears, forward towards the nose, <i>applies to Sheba Mini-Yak</i>
Frontal	A fringe of hair originating at the shoulders that lays forward over the face, <i>applies to Peruvian & Alpaca</i>
Guard Hair	The longer, coarser hairs that show through the finer, silkier undercoat
Gutter	<i>Abyssinian</i> - Elongated centre of rosette, most commonly found on rump rosettes
	<i>Non Rosetted Varieties</i> - A parting of the coat anywhere on the body of the cavy causing the coat to grow away from the gutter, generally found on the belly of afflicted cavies
Head Furnishings	The facial coat of rosetted breeds
Hem	A fold of skin on the outer edge of the ear
Hocks	Where the heel joins the leg - <i>a critical area with regard to foot stops on Dutch</i>
In Pig	Pregnant
Lifter	A rosette fault, where a second rosette has started to form beneath another, <i>applies to Abyssinian</i>
Light Chest	Where the chest colour is lighter than the rest of the body, due to longer ticking and / or poor undercolour in that region, <i>applies to Ticked, q.v. Ticking</i>
Long Ticking	Where ticking is too long, giving the coat a lighter appearance than is desirable, <i>applies to Ticked, q.v. Ticking</i>

Term	Definition as applied to Cavies
Mane	<i>Abyssinian</i> - hair growing from the collar ridge forward between the ears to above the eyes, MUST be erect (q.v. Abyssinian Standard)
	<i>Sheltie</i> - hair from the neck to the shoulder that is swept back over the body
Muzzle	The region including the mouth, nostrils and fore face
Open Centre	A rosette that has an open rather than pinpoint centre, <i>applies to Abyssinian & Crested Breeds</i>
Patchy	<i>Colour</i> - Topcolour appears to be several different shades over the body
Quiff	<i>Smooth hairs</i> - where an area of the coat grows in a different direction to the desirable lie of the coat
Red Eye	Growths of red flesh that protrudes from the inner surface of the eyelid against the eyeball. A disqualification if it is visible without disturbing the eyelid, q.v. Fatty Eye
Roaning	An intermixture of White and coloured hair that is caused by a specific gene. (see also Brindling)
Rosette	Abyssinian/Peruvian / Alpaca - Hair that radiates from a pinpoint centre outwards evenly.
Running Lice	A small coat parasite that can be seen moving through the coat, a disqualification
Runs to Collar	A fault where the coat between the saddle and the collar is flat, <i>applies to Abyssinian</i>
Saddle	<i>Abyssinian</i> - formed by four rosettes across the back
	<i>Dutch</i> - formed by the demarcation (q.v.) between the white & coloured part of the coat across the back
Side Whisker	A protruding tuft of hair growing out just below the ear, a disqualification
Shoulder	<i>Longhair</i> - the coat emanating from the shoulder region of the cavy
	<i>Shorthair</i> - a good shoulder is well fleshed and muscular
Skirting	Hair which fans out over the hips of a cavy against the normal lie of the coat (see also Fanning)
Smellers	Nostrils
Smut	Patch of colour that forms the nose marking on Himalayan & Crested Himalayan
Split Rosette	Where two rosettes are so close they run into each other so neither is formed (q.v. Abyssinian Standard)
Springiness	<i>Coat</i> - when smoothed with the hand, the coat should immediately spring back as it was, <i>applies to Rex</i>
Springy	<i>Coat</i> - when the coat is squeezed in the hands, it should rebound back to original area filled, <i>applies to Alpaca, Merino & Texel</i>
Static Mite	Coat parasite, very small and appear stationary, they can be seen clinging to hair shaft
Stops	Foot stops, the white markings on the hind feet (q.v. Dutch Standard)
Sweep	The coat emanating from the rump of the cavy, <i>applies to all longhair varieties</i>
Swirl	Coat Fault, an almost rosette like, patch of hair in an otherwise smooth coat
Ticking	The patch of colour between the base and the tip of a Ticked hair, <i>note: guard hairs are solid (not ticked) in Ticked Cavies, applies to Ticked and individual colours present on some other varieties</i>
Topcoat	The region of coat that continues to grow in length throughout the life of the cavy. It is usually the coat growing from the spine to 2/3 of the way down the body towards the feet, <i>applies to Longhaired varieties</i> (see also Undercoat)
Undercoat	The shorter hairs on a longhaired cavy, growing from the lower 1/3 of the body. (see also Topcoat)
Undercut	The continuation of the saddle, on the abdomen, which should be straight and without deviation (q.v. <i>Saddle - Dutch</i>)

Abyssinian

<u>Feature</u>	<u>Points</u>	<u>Description</u>
Rosettes	20	Well formed, of good depth and radiating from a pinpoint centre. They should be clear and distinct from each other and placed as follows, Four rosettes in a direct line across the body forming the saddle and side rosettes. A rosette on each hip inline with each other and two thumb shaped rump rosettes with equal centres. Shoulder rosettes optional.
Ridges	20	The ridges to be placed so as to give a neat, close coupled effect and to be straight and erect and stand up well, the main ridges being as follows: Centre Ridge - running along the backbone from collar to rear Collar Ridge - running over the shoulders and at right angles to the <i>Centre Ridge</i> . Back Ridge - running over the hips and back, parallel to the <i>Collar Ridge</i> . Side Ridges - running parallel to the <i>Centre Ridge</i> on either side.
Coat	20	A wealth and depth of thick, harsh coat. Coat NOT to exceed 1.5 inches (4 cm) in length.
Head Furnishings & Mane	15	Head well furnished with hair and good moustache, mane harsh & erect.
Shape & Size	10	Thickset, cobby, broad at the shoulders and large throughout.
Colour	5	Clear & bright with plenty of lustre
Eyes & Ears	5	Eyes large, bright & bold. Ears large & drooping.
Condition	5	Flesh firm & hard when handled, clean & healthy.
TOTAL POINTS	100	

Faults

As listed under *Faults & Disqualifications* at start of Handbook And Breed Specific Faults *In order of Priority*

- Flatness anywhere, especially on the back
- Runs to collar or flat sides
- Weak or twisted ridges
- Double or split rosettes, open centres, lifters or guttered rump rosettes

Disqualifications

As listed under *Faults & Disqualifications* at start of handbook

Guidance to Judges & Exhibitors **The OVERALL EFFECT is MOST IMPORTANT.**

An Abyssinian should be cobby, thickset with a dense coat, giving the ridges their erectness. When the ridges are straight a checkerboard pattern is formed.

The Abyssinian should be short coupled, this is achieved when the **Collar Ridge** is well set back behind the shoulders and the **Back Ridge** is well up in front of the hip bones. This gives a compact animal with **deep centred, cup shaped rosettes**. The head is greatly enhanced by a wealth of **Mane & moustache**, which is formed by the hair growing forward from the jaw line meeting the hair from the nose.

Shoulder Rosettes are optional, but improve the overall appearance when displayed.

Rump Rosette centres are normally two thirds of the way down the rump, but should not be too low.

A double, lifter or split rosette on an otherwise good exhibit should not be heavily penalised.

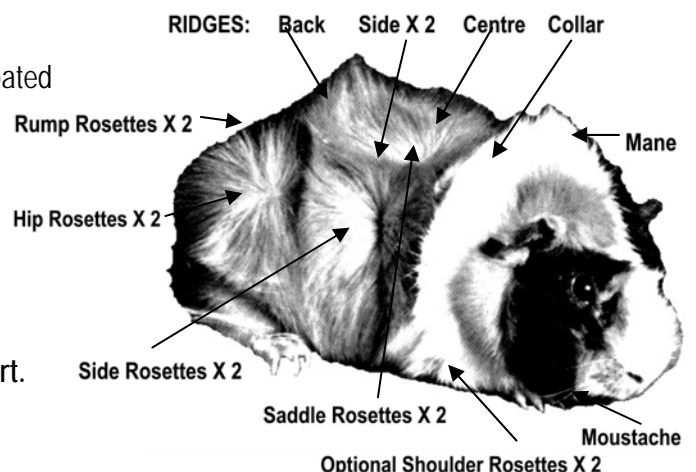
Open centres and guttering are often wrongly penalised on dark coated or light coated Abyssinians with contrasting skin colour.

Boars are most commonly shown in adult classes as they have the harsher coats, but sows should not be unduly penalised.

It is difficult to assess coat qualities in young Abyssinians, their coats not being through usually until about 12 weeks old.

Sows in young should NOT be shown.

Abyssinians should be shown clean and free from grease & dirt.



RexRexRexRex

RexRexRexRex

RexRexRexRex

<u>Feature</u>	<u>Points</u>
Density of Coat	20
Springiness of Coat	20
Shape & Type	15
Length of Coat	10
Texture of Coat	10
Eyes	10
Ears	10
<u>Condition</u>	<u>5</u>
TOTAL POINTS	100

Guide Notes to Judges

- This is a crimped rough coated cavy without rosettes.
- The coat should be thick, short & springy.
- No more than ½ inch (1 ¼ cm) in length, preferably shorter.
- Texture to be coarse on top, allowing for a softer coat on exhibits under 5 months old.
- They should have medium body length with well formed limbs and no narrowness.
- Guard hairs should be removed.
- The head to be wide and moderately blunt, with good width between the eyes.
- *Eyes* should be large, full & bold.
- *Ears* to be drooping, shapely and large.
- Body of good condition with firm flesh.

Faults

As listed under *Faults & Disqualifications* at start of handbook

And breed specific faults

- Extreme centre parting
- Coat length over ½ inch (1¼ cm) in length
- Soft coat on top of body
- Guard hairs
- Flatness of coat anywhere

Disqualifications

As listed under *Faults & Disqualifications* at start of handbook

And breed specific disqualifications

- Rosettes - partial or full
- Hair lying in a different direction from the desirable lie of the coat

Ticked Crested (2003)

<u>Feature</u>	<u>Points</u>	<u>Description</u>
Ticking	24	sharp level ticking extending evenly over body, chest & feet. Grooming is essential to produce an even effect on body and sides. Ticking on chest to be a continuation of that on the body and sides and to be carried well down between the front legs. Feet to match body & chest
Crest	20	to match body colour
Colour	16	topcolour to be bright & lustrous, undercolour to be carried well down to the skin. Belly colour to be the same colour as the body & chest but without ticking (to be tipped) with well defined demarcation line and to be as narrow as possible, although not at the expense of condition
Shape	16	solid body of good width with deep broad shoulders, short head of good width & muzzle
Coat & Condition	12	firm flesh and clean coat are essential. Coat to be short & silky with glossy sheen. Coarse guard hairs to be removed by grooming
Size	4	size to be very desirable, although not at the expense of quality
Eyes	4	large & bold
Ears	4	well shaped, large & drooping
TOTAL POINTS	100	

Faults

As listed under *Faults & Disqualifications* at start of handbook

And Breed specific faults

- Long ticking
- Eye circles
- Light streaks or patches on chest, body or sides
- Lightness of jowls
- Light, dark or odd feet
- White or other odd coloured hairs to be penalised according to quantity

Disqualifications

As listed under *Faults & Disqualifications* at start of handbook

American Crested

<u>Feature</u>	<u>Points</u>	<u>Description</u>
Crest	30	to be a contrasting colour to the body colour
Colour	21	body colour to conform to matching English Self colour
Shape	18	short, cobby body, deep broad shoulders
Coat	10	short & silky
Ears	7	rose petal shaped, slightly drooping with good width between
Eyes	7	large & bold
<u>Condition</u>	<u>7</u>	
TOTAL POINTS	100	

Remarks

- The crest colour to be as near a complete circle of solid colour as possible
- The crest colour should not appear elsewhere on the body
- A blaze of the crest colour to be severely penalised
- Hair of the body colour in the crest to be penalised

Faults & Disqualifications

As listed under *Faults & Disqualifications* at start of handbook

English Crested

<u>Feature</u>	<u>Points</u>	<u>Description</u>
Colour	24	to conform to the colours of the matching English Self
Crest	20	to match body colour
Shape	20	short, cobby body, deep broad shoulders
Coat	12	short & silky
Ears	8	rose petal shaped, set slightly drooping, with good width between
Eyes	8	large & bold
<u>Condition</u>	<u>8</u>	
TOTAL POINTS	100	

Remarks

- The crest to radiate from a centre point between the eyes and the ears
- The crest to be a deep rosette, the lower edge to be **WELL DOWN** the nose
- Any different coloured hairs in the crest to be severely penalised
- Abundance of different coloured hairs on the body to be penalised as Self cavies

Faults & Disqualifications

As listed under *Faults & Disqualifications* at start of handbook

Dalmatian Crested

<u>Features</u>	<u>Points</u>	<u>Description</u>
Spotting	24	coloured spotting on a white body, clear & distinct, well distributed
Crest	20	
Head Markings	16	white blaze with solid colour either side, giving a balanced appearance
Type & Shape	12	to conform to English Self requirements
Feet	8	to be a solid colour
Ears & Eyes	8	ears - large & drooping, eyes bold
Coat & Colour	8	coat - short & silky, colour to conform to ESCC & NACC requirements
<u>Condition</u>	<u>4</u>	to handle firm and be of good size
TOTAL POINTS	100	

N.B. *All colours of English Self, Agouti & Argente are accepted by the Australian National Cavy Council*

Remarks

- The crest to radiate from a centre point between the eyes and the ears
- The crest to be a deep rosette, the lower edge to be **WELL DOWN** the nose

Faults & Disqualifications

As listed under *Faults & Disqualifications* at start of handbook

Dutch Crested

<u>Feature</u>	<u>Points</u>	<u>Description</u>
Crest	20	
Blaze & Cheeks	12	cheek markings to be round and not take in the smellers, but be as near as possible without touching
Foot Stops	12	foot stops must not go around the hocks. The ideal stop to be halfway between the hock and the toe ends. Stops are necessary on both feet, one stop, no stops or stop(s) above the hock to be a disqualification. Minimal requirement for a stop is that the toes are to be covered with white hair
Ears	12	ears to be the same colour as body colour and sound with shapely ear carriage preferred to a high set ear. Shapeliness though not to be favoured at the expense of soundness. Flesh marks to lose points, damaged earlobes to be penalised according to the severity of the falling
Clean Neck	8	
Saddle	8	the saddle to be cut midway on the body with any preference being given to a higher cut rather than a low, slipping saddle
Undercut	8	
Colour	8	
Size, Shape & Condition	8	
Eyes	4	eyes should be bold & bright, of equal size and with no serious defect
TOTAL POINTS	100	

Faults & Disqualifications

As listed under *Faults & Disqualifications* at start of handbook

Himalayan Crested (2003)

<u>Feature</u>	<u>Points</u>	<u>Description</u>
Crest	20	to match body colour
Smut	20	the ideal shape is pear shaped, colour carried well up between the eyes
Colour	16	the body colour should be as white as possible
Feet	16	colour carried well up the legs
Ears	8	colour dense to base
Coat, Shape & Type	8	smooth coated & free from body stain, short, cobby body in appearance with a broad head to resemble the type of a self
Condition	8	clean & firm in flesh
Eyes	4	large & bright red
TOTAL POINTS	100	

Faults & Disqualifications

As listed under *Faults & Disqualifications* at start of handbook

Roan Crested

<u>Feature</u>	<u>Points</u>	<u>Description</u>
Roan Mixing	24	to be even throughout
Crest	20	
Size, Type & Condition	16	
Head	8	clean cut & solid colour
Feet	8	solid colour
Coat	8	to be short & silky, colour to conform with ESCC & NACC standards
Eyes	8	large & bold
Ears	8	set wide apart, large & drooping
TOTAL POINTS	100	

Faults & Disqualifications

As listed under *Faults & Disqualifications* at start of handbook

Tortoise & White Crested

<u>Feature</u>	<u>Points</u>
Patches	40
<i>to be clean cut clear & distinct</i>	20
<i>equal distribution & uniform placing of patches</i>	20
Crest	20
Colour	16
Shape & Size	12
Condition & Coat	8
Eyes & Ears	4
TOTAL POINTS	100

Faults & Disqualifications

As listed under *Faults & Disqualifications* at start of handbook

Rare Variety & Guide Standard Crested Standards

Rare Variety & Guide Standard Crested breeds have the same Full/Guide Standards as their respective non-Crested varieties, as listed in the Rare Varieties & Guide Standard sections of this handbook, with the addition of a crest, which is to conform to that which is required in the English Crested Standard.

With respect to those Rare Varieties that have a full Standard, 20 points are awarded for the crest on the cavy, with the remaining points reduced proportionately in importance in accordance with the non-crested standard.

Faults & Disqualifications

As listed under *Faults & Disqualifications* at start of handbook

Alpaca (2004)

<u>Feature</u>	<u>Points</u>	<u>Description</u>
Coat	50	<i>texture and density</i> 25pts, chops, shoulders, sides and sweep 25pts Texture & Density: The coat should be soft and springy to handle, clearly showing rexoid characteristics, be free flowing, shown clean and unmatted. The coat should be full and dense, especially near the body where the undercoat is more evident. Chops, Shoulders, Sides and Sweep: The chops should be even, dense and well furnished, and of a length in keeping with the age of the cavy and the length of the shoulders. The shoulders should be broad with hair of appropriate length continuing evenly around the sides. The sweep should fall over the hindquarters of the cavy and be full and of even length, being generally a little longer than the sides. When viewed from above, no gaps, thin areas or uneven length should be evident. Allowance should be made for the fact that the coat will appear thinner at the ends in older exhibits, because the undercoat will not be as long.
Frontal	15	The hair constituting the frontal should originate from the shoulders and be brushed so as to evenly cover the face, with no gaps. At the side of the head, this hair should meet hair from the 'chops' of the cavy and fall in a manner producing a 'curtain effect' at the front of the cavy. The frontal should be even and of a length in keeping with the age of the cavy and the length of the shoulders and chops.
Head, Eye and Ears	10	Head to be short and broad with good width to the muzzle. Eyes to be large and bold, well spaced and may be of any colour. Ears to be large rose petal shaped, drooping and set with good width between.
Body	10	to be firm, fit and of good size appropriate to age
Presentation	10	the cavy should be in good condition, with plenty of firm flesh, being clean and tidily groomed. It should be presented on an appropriately sized board and must be shown with a central parting.
Belly	5	the belly should be curly, woolly and dense
TOTAL POINTS	100	

Remarks:

The Alpaca is genetically bred from the Peruvian, as such two rump rosettes are essential to the breed to have the coat growing forward, from these rump rosettes, towards the head. The placement of these rosettes is also important in producing density in the sweep. If the rosettes are high, more hair is pushed into the sweep and it has sufficient density to support its extra length. With low rosettes, the sweep can lack density and as it grows, cause it to hang to show a 'split' in the sweep. Given good placement of the rosettes, there should be no problem with the development of the sweep.

Note: Alpacas may be shown in any colour, or mixture of colours.

Faults & Disqualifications

As listed under *Faults & Disqualifications* at start of handbook

Coronet (2003)

<u>Feature</u>	<u>Points</u>	<u>Description</u>
Texture & Density	25	the coat should be a soft, silky texture and be free flowing. The coat should be full & dense, especially near the body where the undercoat is more evident, whilst the aim is for a straight coat, a slight wave should not be unduly penalised. To be shown clean & un-matted.
Coat	25	when viewed from above, no gaps, thin areas or uneven length should be evident. Allowance should be made for the fact that the coat will appear thinner at the ends in older exhibits, because the undercoat will not be as long.
<i>Chops</i>		should be even, dense & well furnished and of a length in keeping with the age of the cavy and the length of the shoulders
<i>Shoulders & Sides Sweep</i>		should be broad with hair of appropriate length continuing evenly around the sides. should fall evenly over the hindquarters of the cavy and be full and of even length, being generally a little longer than the sides
Head	15	to be short & broad with good muzzle and a gently curving profile with no hint of flatness, hair on head to lie pointing towards the rump
<i>Eyes</i>		to be large, bold & bright and of any colour
<i>Ears</i>		to be large, rose petal shaped, drooping and set with good width between
Coronet	15	on the front of the head, being a rosette that should radiate from a small pinpoint centre. It is to be well formed and symmetrical & should be in keeping with the head, eyes & ears of the cavy to give an overall balanced appearance.
Body	10	to be firm, fit and of good size appropriate to age
Presentation	10	should be shown in good condition, with plenty of firm flesh & be clean and tidily groomed. It should be presented on an appropriately sized board and must be shown with a central parting
TOTAL POINTS	100	

Note: Coronets may be shown in any colour

Faults & Disqualifications

As listed under *Faults & Disqualifications* at start of handbook

Merino (2004)

<u>Feature</u>	<u>Points</u>
Coat	50
<i>texture and density</i>	25
<i>chops, shoulders, sides and sweep</i>	25

Description

Texture & Density:

The coat should be soft and springy to handle, clearly showing rexoid characteristics, be free flowing, shown clean and unmatted. The coat should be full and dense, especially near the body where the undercoat is more evident.

Chops, Shoulders, Sides and Sweep:

The chops should be even, dense and well furnished, and of a length in keeping with the age of the cavy and the length of the shoulders. The shoulders should be broad with hair of appropriate length continuing evenly around the sides. The sweep should fall over the hindquarters of the cavy and be full and of even length, being generally a little longer than the sides. When viewed from above, no gaps, thin areas or uneven length should be evident. Allowance should be made for the fact that the coat will appear thinner at the ends in older exhibits, because the undercoat will not be as long.

Coronet 15

The coronet is on the front of the head, being a rosette that should radiate from a small pinpoint centre. It is to be well formed and symmetrical; and should be in keeping with the head, eyes and ears of the cavy to give an overall balanced appearance.

Head, Eye and Ears 10

Head to be short and broad with good width to the muzzle. Eyes to be large and bold, well spaced and may be of any colour. Ears to be large rose petal shaped, drooping and set with good width between.

Body 10

to be firm, fit and of good size appropriate to age

Presentation 10

the cavy should be in good condition, with plenty of firm flesh, being clean and tidily groomed. It should be presented on an appropriately sized board and must be shown with a central parting.

Belly 5

The belly should be curly, woolly and dense

TOTAL POINTS 100

Note: Merinos may be shown in any colour, or mixture of colours.

Peruvian (2004)

<u>Feature</u>	<u>Points</u>	<u>Description</u>
Coat Texture	20	To be silky with coat flowing softly & freely all over body
Coat Density	15	To be full & dense when assessed near the body, where the undercoat supports the topcoat. Density should also be evident from the appearance of the cavy, in showing no gaps or thin areas in the coat. In older exhibits where the topcoat is longer than the undercoat and the coat is spread over a larger area, allowance should be made for the fact that at the ends of the coat, it will appear thinner
Sweep	15	Should continue evenly from the hind quarters of the cavy, with good length in keeping with the cavy's age. There should be no evidence of parting in the sweephair. In young cavies the sweep may appear to be slightly longer than the sides, but an even length all round is sought in intermediate & adult stock
Shoulders / Sides	15	Should continue from the frontal of the cavy with good length in keeping with the cavy's age. Again no length variation between different parts of the coat should be evident, to continue the curtain effect desired in the cavy
Frontal	15	The hair constituting the frontal should originate from the shoulders and should be brushed so as to evenly cover the face, with no gaps at the side of the head, this should meet hair from the "chops" of the cavy. The chops of the cavy should be strong, with hair all of one length with no gaps. The length of the frontal should be in keeping with the age of the cavy.
Body/Condition	10	To be firm, fit and of good size for age
Head, Eyes & Ears	5	<i>Head</i> to be short and broad with good muzzle, <i>Eyes</i> bold & bright, any eye colour is acceptable <i>Ears</i> large, drooping and well set
Presentation	5	To be presented with a clean, unmatted coat with no resistance when a comb is passed through the coat
TOTAL POINTS	100	

AIM: *Whilst the aim is for a straight coat, a slight wave should not be unduly penalised.*

Colour: Peruvians may be shown in any colour, but may not be satinized or rexed.

Faults

As listed under *Faults & Disqualifications* at start of handbook

And Breed specific faults

Additional rosettes causing a visible impact on the coat, to be penalised according to severity

Faults & Disqualifications

As listed under *Faults & Disqualifications* at start of handbook

General Remarks & Guidance for Judges

The Peruvian is a long coated cavy with two rosettes on the rump, the placement of these rosettes is important in producing density in the sweep. If the rosettes are high, more hair is pushed into the sweep and it has sufficient density to support its extra length. With low rosettes, the sweep can lack density and as it grows, cause it to hang to show a 'split' in the saddle. Given good placement of the rosettes, there should be no problem with the development of the sweep.

The overall appearance looking down onto the top of the cavy should be of an oval shape, but as near as round as possible and should be shown on boards large enough to give a good outline of coat shape, *but subject to a maximum of 20" square (51cm) - IN UK ONLY*. Coat of an even length coming from a central parting along the spine. The hair should fall forwards to cover the head and backwards over the cavy, creating, with the sides and shoulders, a continuous curtain of coat around the body. The undercoat of the Peruvian stops at about 6 to 7 inches (15 to 17 cm), so when the top coat gets to 3 to 4 inches (7.5 to 10 cm) longer than this, there starts to be an impression of thinness in the coat, as increasing amounts of the show board are seen beneath the coat of the cavy. When the coat increases in length towards 18 inches (45cm), it is spread so far out that the individual hairs are apparent and an impression of wispiness is given. This is unavoidable, even with very densely coated cavies. The cavy's density should still be apparent near the body and texture can still be assessed similarly. Both the texture of the coat and density are of great importance. It should be noted that the coat length grows on average 1" (2.5cm) per month.

Sheltie (2003)

<u>Feature</u>	<u>Points</u>	<u>Description</u>
Texture & Density	25	the coat should be a soft, silky texture and be free flowing. The coat should be full & dense, especially near the body where the undercoat is more evident, whilst the aim is for a straight coat, a slight wave should not be unduly penalised. To be shown clean & unmatted.
Coat	25	when viewed from above, no gaps, thin areas or uneven length should be evident. Allowance should be made for the fact that the coat will appear thinner at the ends in older exhibits, because the undercoat will not be as long.
<i>Chops</i>		should be even, dense & well furnished and of a length in keeping with the age of the cavy and the length of the shoulders
<i>Shoulders & Sides</i>		should be broad with hair of appropriate length continuing evenly around the sides.
<i>Sweep</i>		should fall evenly over the hindquarters of the cavy and be full and of even length, being generally a little longer than the sides
Head	20	to be short & broad with good muzzle and a gently curving profile with no hint of flatness, hair on head to lie pointing towards the rump
<i>Eyes</i>		to be large, bold & bright and of any colour
<i>Ears</i>		to be large, rose petal shaped, drooping and set with good width between
Mane	10	to be un-parted, full and of a length in keeping with the age of the cavy, it should be swept back to join the sweep
Body	10	to be firm, fit and of good size appropriate to age
Presentation	10	should be shown in good condition, with plenty of firm flesh & be clean and tidily groomed. It should be presented on an appropriately sized board and must be shown without a central parting
TOTAL POINTS	100	

Note: Shelties may be shown in any colour

Faults & Disqualifications

As listed under *Faults & Disqualifications* at start of handbook

Texel (2005)

<u>Feature</u>	<u>Points</u>	<u>Description</u>
Coat Quality	20	The coat should be soft and springy to handle, clearly showing rexoid characteristics, be free flowing, shown clean and unmatted. The coat should be full and dense, especially near the body where the undercoat is more evident, with tidy and undamaged ends, to be presented with a central parting,
Shoulders & Sides	20	broad shoulders with hair of good length and density continuing around sides, including cheeks
Sweep	15	length and fullness of hair falling over hind quarters, sweep is generally longer than sides, which should be even in length
Head	15	to be short & broad with good muzzle. Bold bright eyes and large drooping well set ears
Belly	10	to be curly, woolly and dense
Body & Condition	10	to be firm, fit & of good size for age
<u>Presentation</u>	<u>10</u>	to be shown clean & un-matted
TOTAL POINTS	100	

Comments

Any colour or mixture of colours is acceptable

Faults & Disqualifications

As listed under *Faults & Disqualifications* at start of handbook

Bi Colour (1984)

<u>Feature</u>	<u>Points</u>
Patches	45
Size, Shape & Condition	20
Colour	15
Eyes	10
<u>Coat</u>	<u>10</u>
TOTAL POINTS	100

Remarks

- To be marked in the same way as a Tortoiseshell
- Colours to be a combination of any two colours other than Black & Red together

Faults

As listed under *Faults & Disqualifications* at start of handbook

And Breed specific faults

- Brindling
- Barring

Disqualifications

As listed under *Faults & Disqualifications* at start of handbook

Brindle (1984)

<u>Feature</u>	<u>Points</u>	<u>Description</u>
Colour	45	Black & Red evenly intermixed
Size, Shape & Condition	20	
Colour	15	
Eyes	10	large & bold
<u>Coat</u>	<u>10</u>	
TOTAL POINTS	100	

Remarks

- The colour to be Black & Red as defined in the ESCC Standard, intermixed evenly over the head, body, feet etc. with black & red hairs in equal proportion

Faults & Disqualifications

As listed under *Faults & Disqualifications* at start of handbook

Dalmatian (2003)

<u>Feature</u>	<u>Points</u>	<u>Description</u>
Body	30	coloured spotting on a white body, clear, distinct and well distributed
Head	20	white blaze with a solid colour on either side giving a well balanced appearance
Type / Shape	15	to be of large size with cobby body & deep broad shoulders. The head to have a well rounded profile with broad muzzle & good width between the eyes
Feet	10	solid colour
Eyes	5	bold eye
Ears	5	ears large & drooping
Coat	5	coat short & silky
Colour	5	colour to conform to the relevant breed standard
<u>Condition</u>	5	fit clean & firm to handle
TOTAL POINTS	100	

Faults & Disqualifications

As listed under *Faults & Disqualifications* at start of handbook & the following

Breed Specific Faults

- Uneven spotting
- Roaning
- Spinal bar
- Head drags
- Uneven / offset blaze

Breed Specific Disqualifications

- Solid head
- Incomplete blaze (blaze to appear complete without disturbance of the coat)
- Nails & / or footpads deviating from the appropriate standard

Guidance to Judges & Breeders

- The Dalmatian, in appearance, is a white cavy with coloured markings. The colour should be confined to the feet, head (with central white blaze) & spotting (evenly distributed throughout the body).
- The distribution & clarity of spotting to be of more importance than size, shape & quantity of spots.
- The spotting should be clear & distinct with good demarcation between the spots. Large solid patches / areas of colour are undesirable.
- Roaned areas (patches of intermingled white & coloured hairs) anywhere on the body are undesirable, intermittent white hairs on the feet & head do constitute roaning.
- A spinal bar is a definite white line lacking any form of spotting running the length of the spine from head to rump (usually found on more heavily marked exhibits).
- The blaze should begin at the nostrils & end at a point between the ears with no break in between.
- A blaze that runs through the mouth or through the demarcation line should be penalised.
- The width of the blaze is immaterial as long as it is central between the eyes & ears & has a balanced shape white whiskers are not a fault.
- The head demarcation should follow the line of the head behind the ears & be clean cut
- A head drag is solid colour running on from the head through the demarcation line onto the body.
- The eye colour to conform to the relevant breed standard, however dark eyes with a ruby tint should not be penalised.
- Some Dalmatians with large eyes may have a blue/grey ring around the outer edge of the eye, this is not a fault.

<u>Feature</u>	<u>Points</u>	<u>Description</u>
Blaze & Cheeks	15	cheek markings to be round and not take in the smellers, but be as near as possible without touching
Foot Stops	15	foot stops must not go around the hocks. The ideal stop to be halfway between the hock and the toe ends. Stops are necessary on both feet, one stop, no stops or stop(s) above the hock to be a disqualification. <i>Minimal requirement for a stop is that the toes are to be covered with white hair</i>
Ears	15	ears to be the same colour as body colour and sound with shapely ear carriage preferred to a high set ear. Shapeliness though not to be favoured at the expense of soundness. Flesh marks to lose points, damaged earlobes to be penalised according to the severity of the failing
Clean Neck	10	
Saddle	10	the saddle to be cut midway on the body with any preference being given to a higher cut rather than a low, slipping saddle
Undercut	10	
Colour	10	
Size, Shape & Condition	10	
Eyes	5	eyes should be bold & bright, of equal size and with no serious defect
TOTAL POINTS	100	

General Comments

- In Agouti Dutch, eye circles to be penalised, the belly colour to be as narrow as possible & dark enough to ensure that the demarcation line on the undercut can be clearly seen
- Also it is required that the Dutch cavy conforms to English Self coat requirements and is without any serious coat faults.
- Show stock should be exhibited clean in coat and the presence of static lice (coat mite) to be penalised according to the severity of the infestation
- Feet stops must not go around the hocks and are necessary on both feet. The ideal stop should be halfway between the hock and the toe ends. The minimum requirement for a stop is that the toes be covered with white hairs.
- Dutch cavies may be exhibited in any self or ticked colour that is recognised by the ANCC.

Faults

As listed under *Faults & Disqualifications* at start of handbook

And Breed specific faults

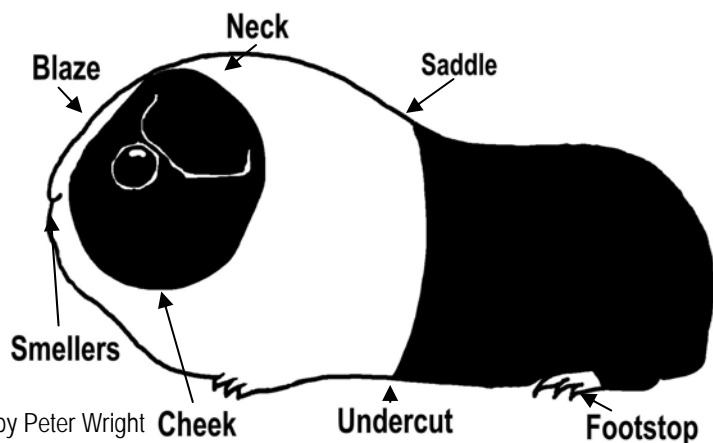
1. Flesh marks on ears
2. Damaged earlobes
3. Eyes Circles on Agouti coloured Dutch
4. Any coloured toenails

Disqualifications

As listed under *Faults & Disqualifications* at start of handbook

And Breed specific disqualifications

1. One Stop
2. No Stops
3. Stop(s) extending above the hock



Drawing by Peter Wright

Himalayan

<u>Feature</u>	<u>Points</u>	<u>Description</u>
Smut	25	the ideal shape is pear-shaped, carried well up between the eyes
Feet	20	colour carried well up the legs
Coat & Colour	20	smooth coated & free from body stain. The body colour should be as white as possible
Ears	10	dense to the base
Shape & Type	10	short & cobby in appearance with a broad head to resemble the type of a Self
Condition	10	clean & firm in flesh
Eyes	5	large & bright red
TOTAL POINTS	100	

Remarks

- Only two colours of Himalayan are recognised - Black & Chocolate
- The body should be pure white with black points (in the Black Himalayan)
- In the Chocolate Himalayan, rich milk chocolate points, with pure white body
- Chocolate Himalayans should have pink pads (although they may have a chocolate blush) and exhibits with excessively dark points to be severely penalised

Faults

As listed under *Faults & Disqualifications* at start of handbook

And Breed specific faults

- Brindling of points & muddy colour
- Excessively poor body colour (SEVERE PENALTY)
- Excessively dark points on Chocolate Himalayans

Disqualifications

As listed under *Faults & Disqualifications* at start of handbook

And Breed specific disqualifications

- White toenails and / or white patches on pads

Tortoiseshell

<u>Feature</u>	<u>Points</u>	<u>Description</u>
Patches	45	clear & distinct
Size, Shape & Condition	20	
Colour	15	
Eyes	10	large & bold
Coat	10	
TOTAL POINTS	100	

Remarks

- The colours to be black & red as defined in the English Self Standard
- Colours are to be equally distributed in distinct patches, the smaller and more uniform the better

Note:

Although not in the standard, it is acceptable for a small spot (no larger than a 1¢ piece) on a Tortoiseshell cavy, preferably on an obscure location e.g. belly or inside of leg

Faults & Disqualifications

As listed under *Faults & Disqualifications* at start of handbook

Tri Colour (2006)

<u>Feature</u>	<u>Points</u>	<u>Description</u>
Patches	50	to be clean cut, clear & distinct (25pts) equal distribution & uniform placing of patches (25pts)
Colour	20	
Size & Shape	15	
Coat & Condition	10	
<u>Eyes & Ears</u>	<u>5</u>	
TOTAL POINTS	100	

- Remarks**
- The colours to be any three Self or Agouti colours other than black, red & white (together) in square cut patches of equal size and placed alternately on each side of the cavy
 - Each colour must be clear and distinct without being intermixed, one with another

Faults
As listed under *Faults & Disqualifications* at start of handbook
And breed specific faults

- **Bands:** patches of colour going more than ½ way around the body
- **Belts:** a patch of colour around the body part way
- **Brindling:** different coloured hairs intermixed in the patches
- Cavies being short of any coloured patches on either side shall be penalised

Disqualifications
As listed under *Faults & Disqualifications* at start of handbook

Roan (2003)

<u>Feature</u>	<u>Points</u>	<u>Description</u>
Body	30	roaning to be even throughout the body
Head	20	to be of solid colour with clean cut demarcation line
Type / Shape	15	to be of large size with cobby body and deep broad shoulders. The head to have a well rounded profile with broad muzzle & good width between the eyes
Feet	10	solid colour
Eyes	5	bold eye
Ears	5	to be large & drooping
Coat	5	silky & short
Colour	5	to conform to the relevant breed standard
<u>Condition</u>	<u>5</u>	should be fit, clean & firm to handle
TOTAL POINTS	100	

Faults & Disqualifications
As listed under *Faults & Disqualifications* at start of handbook & the following
Breed Specific Faults (to be penalised according to extent)

- Uneven roaning & dappled belly, spinal bar, head drags & solid patches on body

Breed Specific Disqualifications

- Any vestige of a blaze (solid group/s of white hairs above the mouth)
- Nails & / or footpads deviating from the appropriate standard

continued on next page.....

Guidance to Judges & Breeders

- The Roan is basically a coloured cavy with white hairs evenly mixed throughout the body.
- Solid colour should be confined to the head & feet, which should contrast sharply with the evenly roaned body.
- Within the roaned area an even mix of white & coloured hairs is desirable, however roaning to be of more importance than the exact ratio of white to coloured hairs. White whiskers are not a fault.
- A spinal bar is a definite white line running the length of the spine from head to rump (usually found on the more heavily marked exhibits).
- A dappled belly has the appearance of spots intermingled with the roaning, solid patches of any colour, anywhere in the roaned area is undesirable.
- The head should be of solid colour with clean cut demarcation following the line of the head behind the ears.
- Intermittent white hairs anywhere on the face/head do not constitute roaning or a vestige of a blaze.
- A head drag is solid colour running onto the body from the head through the demarcation line.
- The eye colour to conform to the relevant breed standard, however dark eyes with a ruby tint should not be penalised.

Sable

<u>Feature</u>	<u>Points</u>	<u>Description</u>
Colour	30	body to be a Sepia Brown on back, the sepia colour, which extends along the length of the back, to shade gradually to a lighter colour on chest and flanks and down to beige on the belly. Face, head and ears to be masked by a darker shade than the body
Type	20	similar to that of Self breeds. Size as large as possible, consistent with good type
Feet	15	colour as for face & head
Coat	10	short & silky
Ears	10	colour as for face & head, rose petal shaped and slightly drooping
Condition	10	similar to all breeds
Eyes	5	large & bold, dark as possible
TOTAL POINTS	100	

Faults

As listed under *Faults & Disqualifications* at start of handbook

And Breed specific faults

- Foreign coloured hairs
- Long coat
- Flakiness or streaks of colour rather than shading

Disqualifications

As listed under *Faults & Disqualifications* at start of handbook

And breed specific disqualifications

- White toenails
- Patches of alien colour
- White flesh on foot pads and ears

Tortoise & White

<u>Feature</u>	<u>Points</u>	<u>Description</u>
Patches	50	to be clean cut, clear & distinct (25 points) equal distribution & uniform placing of patches (25 points)
Colour	20	
Size & Shape	15	
Coat & Condition	10	
<u>Eyes & Ears</u>	<u>5</u>	
TOTAL POINTS	100	

- Remarks
- The colours to be black, red & white, in square cut patches of equal size and placed alternately on each side of the cavity
 - Each colour must be clear and distinct without being intermixed one with another

Faults
As listed under *Faults & Disqualifications* at start of handbook
And breed specific faults

- **Bands:** patches of colour going more than ½ way around the body
- **Belts:** a patch of colour around the body part way
- **Brindling:** different coloured hairs intermixed in the patches
- Cavies being short of any coloured patches on either side shall be penalised

Disqualifications
As listed under *Faults & Disqualifications* at start of handbook

Harlequin (Guide Standard)

<u>Feature</u>	<u>Description</u>
Head	half black, half yellow, divided down centre of face
Body Patches	distribution of three colours each side, with equal balance of black and yellow and black/yellow mixture. Straight line top & under, patches of uniform size
Colours	Harlequin - black, yellow & black/yellow mixture Chocolate Harlequin - chocolate, yellow & chocolate/ yellow mixture
Type & size	general cavy type, large as possible
Eyes	dark, large & round
Ears	large well set & drooping

Faults
As listed under *Faults & Disqualifications* at start of handbook
And breed specific faults

- Belting and absence of colour on one side
- White toes
- Completely solid colour on one side (SERIOUS FAULT)

Disqualifications
As listed under *Faults & Disqualifications* at start of handbook
And breed specific disqualifications

- ANY white on body
- White leg (s)
- Large white patch on head

Magpie (Guide Standard, 1984)

<u>Feature</u>	<u>Description</u>
Head	half black, half white, divided down centre of face
Body Patches	distribution of three colours each side, with equal balance of black and white and black/white mixture. Straight line top & under, patches of uniform size
Colours	Black - black, white & black/white mixture Chocolate - chocolate, white & chocolate/ white mixture
Type & size	general cavy type, large as possible
Eyes	dark, large & round
Ears	large well set & drooping

Faults & Disqualifications

As listed under *Faults & Disqualifications* at start of handbook

And breed specific faults

- Belting and absence of colour on one side
- Completely solid colour on one side (SERIOUS FAULT)

Satin Self

(2005)

<u>Feature</u>	<u>Points</u>	<u>Description</u>
Satinisation	30	due to the clarity of the glass like hair shell and its ability to reflect light, the Satin cavy has a distinct sheen on its coat and this should be pronounced on all body areas. To assess the degree and quality of the sheen, judges should handle the cavy in such a way that the coat 'catches the light' to its fullest advantage.
Colour	21	Any Self colour, but must be even throughout, although allowance should be made that the shorter hair on the face may make the colour appear darker than the body. Undercolour should be carried down to the skin. Colour & pigmentation to conform to a recognised ANCC Self colour.
Type	18	<i>head and body</i> - head - to be a broad roman nose with a good width of muzzle and rounded at the nostrils. body - to be short and cobby with very deep broad shoulders, firm, fit and of a good size appropriate to age.
Coat	10	
Ears	7	to be rose petal shaped, drooping and set with good width between
Eyes	7	to be large and bold
Presentation	7	must be fit, clean and firm to handle
TOTAL POINTS	100	

Notes On Judging Satin Cavies

- Satinisation imparts an extra intensity to any colour.

Faults

As listed under *Faults & Disqualifications* at start of handbook

And Breed specific faults

- Woolly or sparse coat
- Lack of Sheen
- Harsh texture

Disqualifications

As listed under *Faults & Disqualifications* at start of handbook

Satin AOV

(2005)

Point Allotment

- Each breed to have **30 points** allocated for Satinisation
- Then the 100 points already accredited to the breed reduced to 70 points (in the same %age ratio)
- **Satinisation** due to the clarity of the gloss like shell and its ability to reflect light, the Satin cavy has a distinct sheen on its coat. ***Satinisation is the single most important factor***
- **Coat** to reflect the coat qualities of the base breed

Notes On Judging Satin Cavies

- To assess the degree and quality of the sheen, judges should handle the cavy in such a way that the coat "catches the light" to its fullest advantage.
- Satinisation imparts an extra intensity to any colour.

Faults

As listed under *Faults & Disqualifications* at start of handbook

And Breed specific faults

- Woolly or sparse coat
- Lack of Sheen
- Harsh texture (with the exception of the Rex, Abyssinian and Sheba Mini Yak)

Disqualifications

As listed under *Faults & Disqualifications* at start of handbook

Self (1987, Amended 2002 & 2003)

<u>Feature</u>	<u>Points</u>	<u>Description</u>
<u>Colour</u>	30	Topcolour: to be lustrous and of even shade all over the head & body Undercolour: to match topcolour down to the skin, giving an appearance free from flakiness hair on feet to match body colour
<u>Type</u>	25	broad roman nose with good width of muzzle, rounded at the nostrils, short & cobby body with very deep broad shoulders
<u>Coat</u>	15	to be short and silky with a glossy sheen
<u>Ears</u>	10	rose petal shaped, set wide apart, large & drooping
<u>Eyes</u>	10	large & bold
<u>Presentation</u>	10	condition, cleanliness & grooming
TOTAL POINTS	100	

Faults

As listed under *Faults & Disqualifications* at start of handbook

And Breed specific faults

- Hairs of a different colour to be penalised according to quantity
- Dark pigment on rim of ears to be penalised (applies to all colours except Self Black)
- White toenails, except on Self Whites

Disqualifications

As listed under *Faults & Disqualifications* at start of handbook

Guidance to Judges & Exhibitors

- The outline of the English Self cavy should consist of a gentle curve, rising from the nostrils to the shoulder, then dipping to the back and leveling briefly before dipping once more over the hindquarters
- Size is to be very desirable, but not at the expense of cobbiness or quality
- Boars, if complying with the Standard, shall not be penalised when in competition with sows. Normally the sex of both, boars & sows will be apparent from their facial expression
- Great attention should be paid to condition, the cavy should carry plenty of firm flesh without being gross or flabby and free from physical disabilities
- The colour of young Lilac & Beige cavies is appreciably darker than that expected in an adult exhibit. This should be taken into account when judging young classes

Self Slate (Guide Standard, 1992)

<u>Colour</u>	must be solid colour of Slate Blue - carried down to the skin
<u>Shape</u>	short & cobby with deep broad shoulders
<u>Coat</u>	short & silky
<u>Ears</u>	rose petal shaped and drooping
<u>Eyes</u>	large & dark as possible
<u>Pigmentation</u>	blue pigmentation on feet, ears and nostrils to be aimed for
<u>Condition</u>	must be clean, fit & firm to handle

Faults & Disqualifications

As listed under *Faults & Disqualifications* at start of handbook

ALL Self Colour Requirements over leaf.

Self Cream Pink Eyed (Guide Standard, 2008)

Feature	Description
Colour	Top colour to be lustrous and of even shade all over the head and body. Under colour to match top colour down to the skin giving an appearance free from flakiness. Hair on feet to match body colour.
Type	Broad roman nose with good width of muzzle rounded at the nostrils, short and cobby body with deep broad shoulders.
Coat	To be short and silky with a glossy sheen.
Ears	Rose petal shape set wide apart, large and drooping.
Eyes	Large and bold.
Presentation	(i.e. Condition cleanliness and grooming)

Should be a pale even colour, free from lemon or yellow tinge. Eyes pink. Ears pink/cream pads flesh pink.

Faults

As per Self standard.

Disqualifications

As per Self standard.

SELF COLOUR REQUIREMENTS

Colour	Coat Colour	Eye Colour	Ear Colour	Pad Colour
Beige	Should be an even medium colour * <i>see note below</i>	Pink	Pink / Beige	Pink / Beige
Black	To be deep & lustrous	Dark	Black	Black
Buff	Deep, rich Buff shade with no hint of Lemon, Apricot or Cream	Dark	Pink / Buff	Pink / Buff
Chocolate	Should be a rich dark colour	Dark	Chocolate	Chocolate
Cream	Should be a pale even colour, free from Lemon or Yellow tinge # 🐾	Pink or Dark	Pink / Cream	Flesh Pink
Golden	Should be a medium colour, no suggestion of Yellow, Brassiness or Redness	Pink or Dark	Pink / Golden	Pink / Golden
Lilac	Should be an even medium dove Grey colour, no suggestion of Beige	Pink	Pink / Lilac	Pink / Lilac
Red	Should be a rich dark colour	Dark	Black	Black
Saffron	Should be a medium Sand colour	Pink	Pink	Pink
White	Should be pure White	Pink or Dark	Pink / White	Flesh Pink
Slate 🐾	must be solid colour of Slate Blue - carried down to the skin	Dark	Blue	Blue

* the belly colour of a young Beige, indicates the colour it will attain when adult age is reached

🐾 the PE Cream is a Guide Standard only (2008)

🐾 **GUIDE STANDARD**

Agouti (1991)

<u>Feature</u>	<u>Points</u>	<u>Description</u>
Ticking	30	sharp level ticking extending evenly over body, chest & feet. Grooming is essential to produce an even effect on body and sides. Ticking on chest to be a continuation of that on the body and sides and to be carried well down between the front legs. Feet to match body & chest
Colour	20	topcolour to be bright & lustrous, undercolour to be carried well down to the skin. Belly colour to be the same colour as the body & chest but without ticking (to be tipped) with well defined demarcation line and to be as narrow as possible, although not at the expense of condition
Shape	20	solid body of good width with deep broad shoulders, short head of good width & muzzle
Coat & Condition	15	firm flesh and clean coat are essential. Coat to be short & silky with glossy sheen. Coarse guard hairs to be removed by grooming
Size	5	size to be very desirable, although not at the expense of quality
Eyes	5	large & bold
Ears	5	well shaped, large & drooping
TOTAL POINTS	100	

Faults

As listed under *Faults & Disqualifications* at start of handbook

And breed specific faults

- Long ticking
- Eye circles
- Light streaks or patches on chest, body or sides
- Lightness on jowls
- Light, dark or odd feet
- White or other coloured hairs to be penalised according to quantity

Disqualifications

As listed under *Faults & Disqualifications* at start of handbook

Notes for Guidance to Judges & Exhibitors

- Chest faults are often accompanied by poor colour and if this is the case should be severely penalised
- Dark or unticked feet (although this is a fault) should be preferred to light or uneven feet
- Exhibits should not be penalised for a wide belly, unless the belly is visible when the cavy is viewed from the side
- A small degree of eye circles or some unevenness of feet should not be unduly penalised in exhibits under 5 months old as these faults may clear as the cavy matures
- Ears free from hems are to be preferred
- In judging Agoutis, generally, the emphasis must be on quality of Ticking, Colour, Type and Condition. Exhibits should not be unduly penalised for minor faults if they possess these qualities

RECOGNISED AGOUTI COLOURS

Colour	Ticking Colour	Under Colour	Belly Colour	Ear Colour	Eye Colour	Pad Colour
Golden Agouti*	Dark Golden	Deep Black	Even rich Mahogany, free from Brassiness	Black	Dark	Black
Silver Agouti*	Silver	Deep Black	Rich even silver, free from Whiteness	Black	Dark	Black
Cinnamon Agouti	Silver	Deep rich Cinnamon	Same colour as the Ticking colour	Cinnamon	Ruby	Cinnamon
Lemon Agouti	Lemon	Deep Black	Even Lemon	Black	Dark	Black
Chocolate Agouti	Orange	Rich deep Chocolate	Rich even Orange	Chocolate	Ruby	Chocolate
Cream Agouti	Lemon	Rich deep Chocolate	Even Lemon	Chocolate	Ruby	Chocolate

* The Golden Agouti is genetically from Red, thus colour calls for a deep rich hue (referred to as Mahogany with bright top)

* The Silver Agouti should not have a white belly or ticking - preferably a darker silver shade

Argente (AUST. 2002)

<u>Feature</u>	<u>Points</u>	<u>Description</u>
Ticking	30	sharp level ticking extending evenly over body, chest & feet. Grooming is essential to produce an even effect on body and sides. Ticking on chest to be a continuation of that on the body and sides and to be carried well down between the front legs. Feet to match body & chest
Colour	20	topcolour to be bright & lustrous, undercolour to be carried well down to the skin. Belly colour to be the same colour as the body & chest but without ticking (to be tipped) with well defined demarcation line and to be as narrow as possible, although not at the expense of condition
Shape	20	solid body of good width with deep broad shoulders, short head of good width & muzzle
Coat & Condition	15	firm flesh and clean coat are essential. Coat to be short & silky with glossy sheen. Coarse guard hairs to be removed by grooming
Size	5	size to be very desirable, although not at the expense of quality
Eyes	5	large & bold
Ears	5	well shaped, large & drooping
TOTAL POINTS	100	

Faults & Disqualifications

As listed under *Faults & Disqualifications* at start of handbook

And breed specific faults

- Large patches of unticked hairs to be severely penalized.
- Indistinct colours in either ticking or undercolour to be severely penalized.
- Long ticking.
- Eye circles.
- Light streaks or patches on chest, body or sides.
- Lightness of jowls.
- Light, dark or odd feet.
- Excessively dark pigment.
- White or other odd coloured hairs according to severity.

REMARKS

The colour description should state the ticking colour first then the undercolour e.g Golden / Lilac

DESCRIPTION OF RECOGNISED ARGENTE COLOURS						
Colour	Ticking Colour	Under Colour	Belly Colour	Ear Colour	Eye Colour	Pad Colour
Golden / Lilac	Golden	Deep Lilac	Golden tips on Lilac undercolour	Pink / Lilac	Pink to Dark Pink	Pink / Lilac
Golden / Beige	Golden	Deep Beige	Golden tips on Beige undercolour	Pink / Beige	Pink to Dark Pink	Pink / Beige
White / Lilac	White	Deep Lilac	White tips on Lilac undercolour	Pink / Lilac	Pink	Pink / Lilac
White / Beige	White	Deep Beige	White tips on Beige undercolour	Pink / Beige	Pink	Pink / Beige
Lemon / Lilac	Lemon	Deep Lilac	Lemon tips on Lilac undercolour	Pink / Lilac	Pink	Pink / Lilac
Lemon / Beige	Lemon	Deep Beige	Lemon tips on Beige undercolour	Pink / Beige	Pink	Pink / Beige

Ridgeback Ridgeback Ridgeback Ridgeback

Ridgeback (2004) Working Title

Guidelines for exhibitors and judges.

- General Description:** The Ridgeback is a smooth coated cavy with a pronounced unbroken ridge of hair standing erect along the centre of its back, following the line and width of the spine.
- Head Eye and Ears:** Head to be short and broad with good width to the muzzle. Eyes to be large and bold, well spaced and may be of any colour. Ears to be large rose petal shaped, drooping and set with good width between.
- Body:** To be cobby and compact.
- Coat:** The coat should be smooth and short.
- Ridge:** The ridge should be pronounced, unbroken, erect and straight, running down the centre of the back from between the ears to the hips. The ridge should be up to 2.5 cm (one inch) in height and be most pronounced at the shoulder and tapering towards the rear end.

Presentation: The cavy should be in good condition, with plenty of firm flesh, being clean and tidily groomed. It should be of a good size and appropriate to age, but whilst size is preferable it should not be at the expense of quality.

Disqualifications

As listed under *Faults & Disqualifications* at start of handbook

And Breed specific disqualifications

- Rosettes on the cavy

Sheba (2005) Working Title

Proposed Name: Sheba

Feature

Coat Quality

Head Furnishings & Fringe

Rosettes

Shape & Size

Eyes & Ears

Condition

Presentation

Description

To be a wealth and depth of lustrous, strong coat. The coat should have sufficient density and strength to give lift around rosettes, presenting a dishevelled appearance. Length to be in keeping with age, though slower rates of coat growth not to be unduly penalised.

Head furnishings to consist of Mutton Chops, Mane and Fringe. Mutton Chops should be strong and extend outward from the face and be equal in length. The hair constituting the Fringe should originate from the shoulders and back of neck, and should be presented in a dishevelled manner and with lift, away from the head and face. The Mane should stand erect and aid in pushing the fringe upwards.

Should be clear and distinct from each other and radiate from a pin point centre. They should be placed evenly all over the cavy with as many as possible to provide maximum lift.

Thickset, cobby, broad at the shoulders and large throughout.

Eyes large, bright & bold. Ears large and drooping.

Flesh firm and hard when handled, and clean.

To be presented in a natural rosetted state and without a parting, clean and with undamaged ends to the hair.

Remarks

- The coat should be sufficiently strong and dense to prevent an impression of flatness.
- The coat should stand away from the body at the rosettes.
- The mane is an extension of the Abyssinian feature, and therefore should be erect and pushing hair upwards towards the centre of the neck. Manes which lack this quality should be penalised.
- In exhibits with good density the rosettes may not be visible due to presentation, this is not a fault.
- The Fringe should be presented to one side of the head, so as not to cover the face.

Faults

- Flatness anywhere.
- Fringes that cover the face completely.
- Open rosette centres, lack of rosettes.

Disqualifications

As listed under Faults & Disqualifications at start of handbook

Comments

The Sheba is ideally a longhaired rosetted cavy. Its coat will grow continually. It will be suitably rosetted similar to the Abyssinian with as many extra rosettes as possible placed evenly over the cavy. Having a wealth and depth of strong lustrous coat will also give maximum lift to coats, presenting a dishevelled appearance.

From a breeding and genetic perspective, the Sheba is a longhaired Abyssinian with a genotype of RRmmll. RRmm being the genotype for the Abyssinian and combined with ll will present the cavy with full length of coat growth.

It is the strong, lustrous coat that is inherited by the Sheba. The harsh coat is lost by coat length, and like the Peruvian with the same genotype, can range from coarse to silky in texture. In the Sheba we aim for a strong coat, but do not require a harsh texture, as mentioned this is lost with coat length. The coat should ideally be a wealth and depth of strong, lustrous coat.

The Sheba will also have a continual length of coat growth, as with other longhairs, slowing as the animal ages. This is easily attainable. Cavies of slower coat growth should not be unduly penalised, as long as an impression of lift is given on presentation.

Flatness of coat is to be penalised, however cavies with good density should have good lift if all rosettes are present.

These cavies are to be presented in a natural rosetted state, and clean. Wrapping and regular bathing will be required to keep the coat in its best condition. In full adult coat, a Sheba should present itself as a mass of lustrous whorled coat standing away from the body and free of staining and tangles.

Gold/Slate Agouti (2008) Working Title

Guidelines for exhibitors and judges.

Ticking Colour:	Deep Golden
Undercolour:	Slate
Belly Colour:	Even rich mahogany, free from brassiness.
Ear Colour:	Blue/Slate.
Eye Colour:	Dark as possible.
Pad Colour:	Blue/Slate.

All other features, faults, disqualifications and description would be the same as for any other Agouti.

Faults:

Eye colour not dark enough.

Pigment not dark enough.

These faults are found in Gold/Slate Agouti crossed with the Gold/Lilac Argente as these will have lighter pigment and dark pink eyes. The eyes tend to get darker as they get older but the pigment will not change much.

Observations from the promoter of the breed:

If the eye colour is not dark enough, then neither is the Slate colour or the pigment colour. There is also the problem of overly dark Gold/Lilac Argente crosses between Gold/Slate Agouti and Gold/Lilac Argente, but it is up to the judge to assess this and make their judgement. Pale pigment, poor coloured Slate and eyes that are too pink are signs of this, just as it is for Self Slates. The colour of the eyes darken slightly as the cavy gets older, but as the eyes darken the colour also fades and the pigment does not change much, so even in a young cavy it is possible to tell if it is a true Gold/Slate or not.

I have also chosen to call it Gold/Slate like the Golden Agouti.

The best Gold/Slates are born very dark in colour and as they grow they go through a "brown stage" where they look more brown than slate and even look very like Tans as the ticking does not show up well. At the age of around 3 – 4 months they have a lovely dark slate base colour with rich golden ticking.